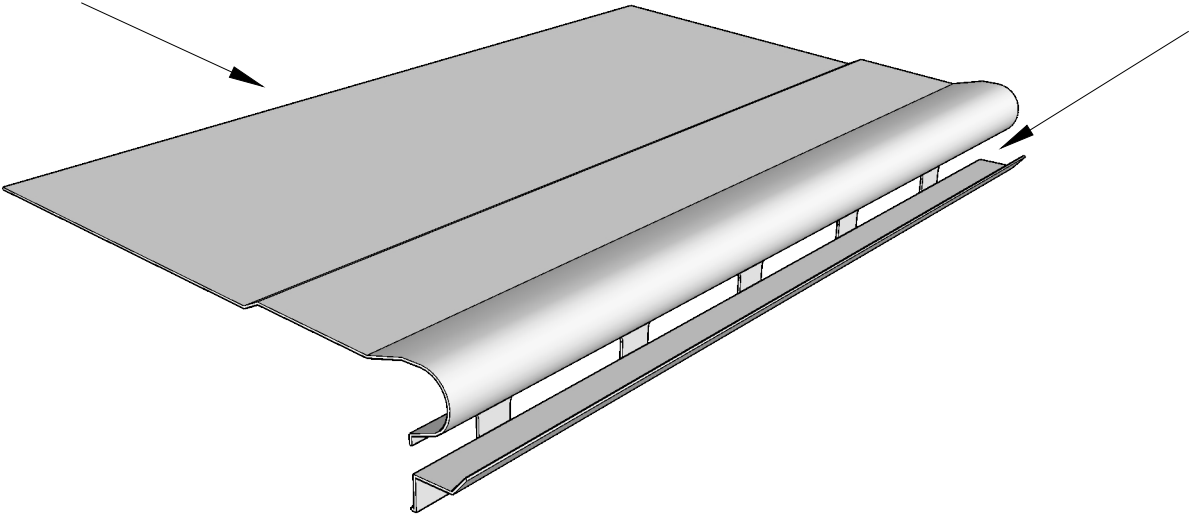


K&M Gutter Cover

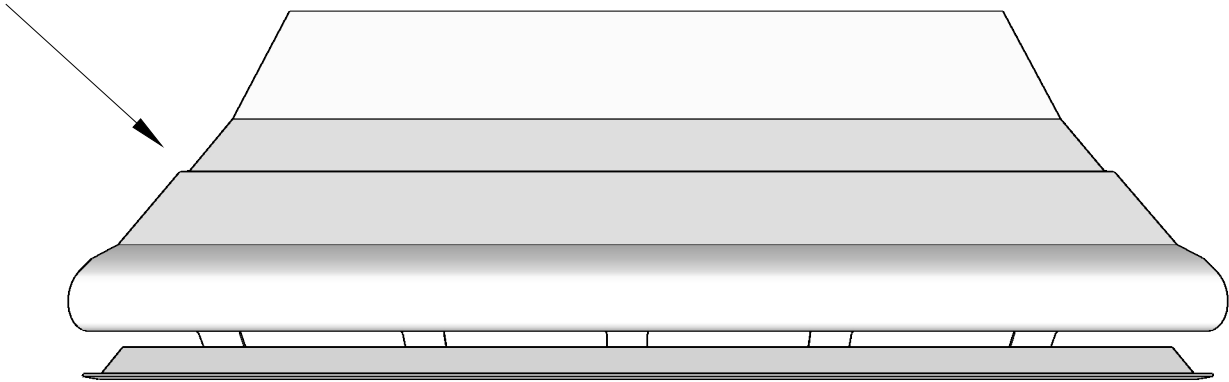
Keep the absolute most amount of debris out of your gutter system!

Oversized back to mount under roof

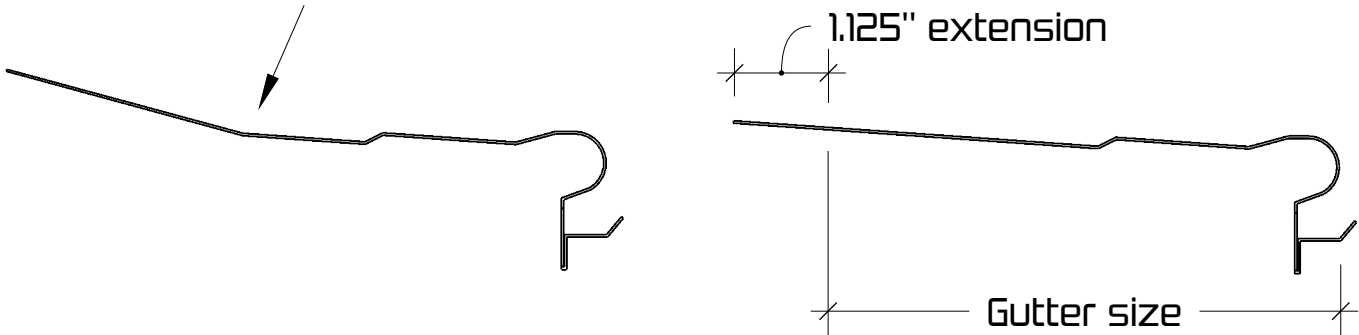
2" wide holes

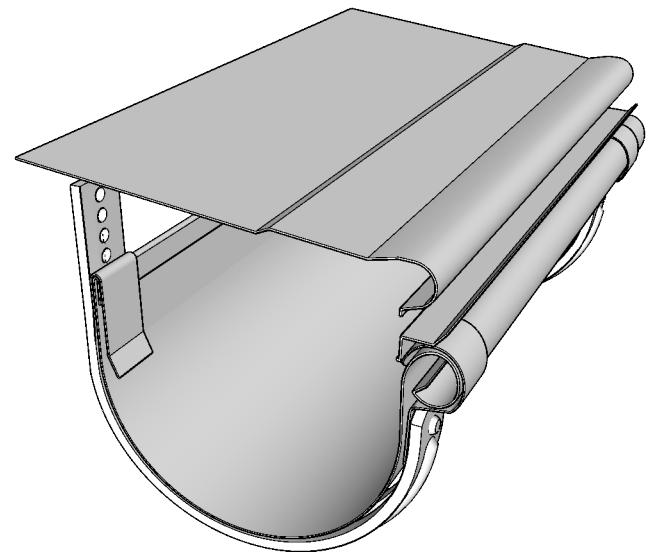
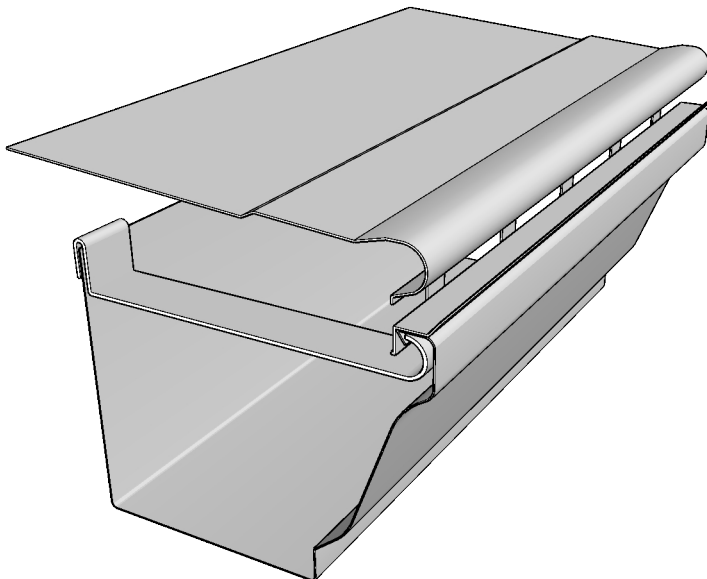
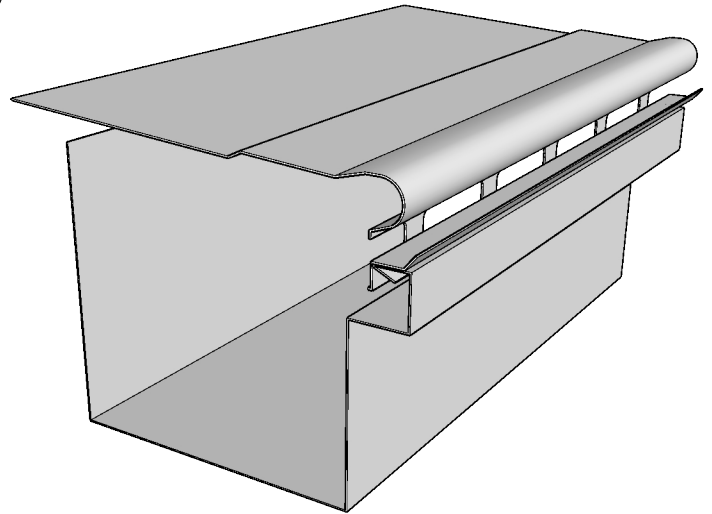
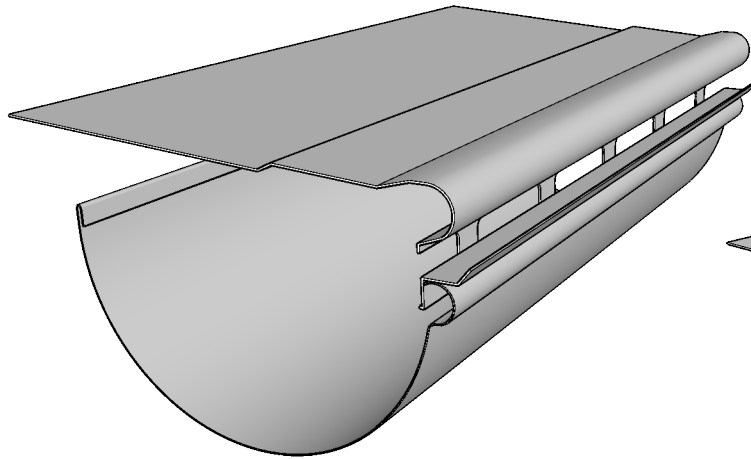


Joggle bends help slow down water in heavy rains



Bend on site when needed





- 1 - Bend back of gutter cover to match roof pitch when necessary.
- 2 - Secure front bead to gutter by zip screws.
- 3 - Add end caps to finish installation.

Standard Materials:

Copper, Aluminum, Stainless Steel, Lead Coated Copper & Steel. May also be manufactured in other materials. Please contact us for a quote.



1310 E. Cornwallis Rd.
Durham, NC - 27713
(919) 544-8887 - Fax: 544-8898
info@kmsheetmetal.com - www.kmsheetmetal.com

K&M Gutter Cover

Available in 5' Lengths

REVISIONS	
MM/DD/YY	REMARKS
1	...ORIGINAL DRAFT OF DRAWING
2	...
3	...
4	...
5	...

101
D