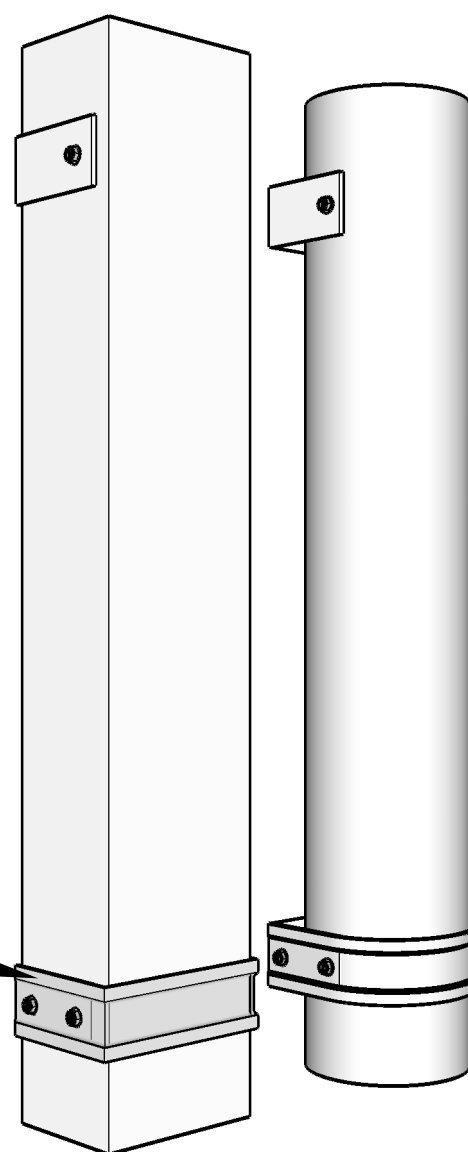


Downspout Size	A	B	C	Stock Size
2"x3" or 3" Round	3.25"	1.75"	1.5" or 2"	14"
3"x4" or 4" Round	4.25"	2.75"	1.5" or 2"	19"
4"x5" or 5" Round	5.25"	2.75"	1.5" or 2"	20"

Available in 0.027" aluminum, Kynar finish aluminum (0.032") and steel (24 gauge) 24 gauge galvalume and 24 guage stainless steel.

Can be manufactured in different metals / dimensions.

Can be used in conjunction with K&M's Standard Downspout Strap. When using with our standard downspout strap the C measurement should be 1.5"



1310 E. Cornwallis Rd.  
Durham, NC - 27713  
(919) 544-8887 - Fax: 544-8898  
info@kmsheetmetal.com - www.kmsheetmetal.com

## Hidden Mount Downspout Strap

REVISIONS	
MM/DD/YY	REMARKS
1	..ORIGINAL DRAFT OF DRAWING
2	...
3	...
4	...
5	...

100  
D