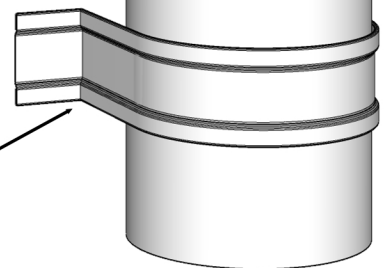


Size	A	B	C	D	E	F
3"	3.125"	2.988"	3.125"	6.113"	1.562"	14"
4"	4.125"	2.700"	4.125"	6.825"	1.562"	16"
5"	5.125"	3.414"	5.125"	8.539"	1.562"	20"
6"	6.125"	3.129"	6.125"	9.254"	1.562"	22"

Available in copper, 0.027" aluminum, Kynar finish aluminum (0.032") and steel (24 gauge) and in 24 gauge galvalume.
Can be custom manufactured in different metals / dimensions.

A larger version is available where (B) is 2" longer, making (F) 4" longer.
Also fits corrugated downspouts.

Wall portion bent on site by installer



Stretchout Dimension (F) - Also sold in this version

